



PRODUCT RANGE

Commercial Vehicle Tyres



Semperit. A brand of Continental.

SEMPERIT 

Since 1906.



INEXHAUSTIBLE. JUST LIKE YOU.

Semperit – A brand with tradition. Since 1906.

You can always rely on its quality – all year round, in all regions, in the most difficult situations and the most adverse conditions. Because Semperit comes from the Latin “semper it”, meaning “It always works”.

We ensure this by constantly measuring ourselves against your requirements and continually evolving for you, without losing sight of our roots in the process. This is why both drivers and fleet managers trust this distinguished brand.

Since the incorporation into the Continental Group in 1985, Semperit has benefited from the experience and technical expertise of one of the leading tyre manufacturers in Europe. Core competencies have grown together, but Semperit always has and always will be a brand with its own heart and soul.

PRODUCT OVERVIEW



FRONT AXLE DRIVE AXLE TRAILER AXLE



RUNNER F2
M+S **RUNNER D2**
M+S **RUNNER T2**
M+S

FRONT AXLE DRIVE AXLE TRAILER AXLE



WORKER F2
M+S **WORKER D2**
M+S **WORKER T2**
M+S

ALL AXLES



CITY A2
M+S

FRONT AXLE DRIVE AXLE TRAILER AXLE



WINTER F2
M+S **WINTER D2**
M+S



M 349 **M 470**
M+S **M 422**



M 434 **EURO-DRIVE**
M+S **M 222**



M 277
M+S



Reliable.

For long-haul and regional transport.

From Hamburg to Lisbon or Munich to Copenhagen – in long-haul transport, you face hundreds and thousands of kilometres, high speeds and heavy loads. Where time and cost pressures are part of everyday business life, reducing downtime to an acceptable minimum is particularly important.

Because low mileage costs make a decisive contribution to your competitiveness, increasing mileage is at the centre of our developments. With Semperit truck tyres, you stay mobile longer and we ensure that performance remains optimal even on the last few kilometres – when you leave the highway just before you reach your destination.

**IGOR,
4,236,236 KM
SINCE 1980**

Inexhaustible. Just like you.



Highway/Regional

RUNNER SERIES

The mileage performer

The RUNNER series sets the benchmark. Designed for regional applications and long-distance routes, the Semperit RUNNER is your reliable partner when it's not just about getting from A to B, but about mastering the route.

RUNNER F2



Front axle tyre

- Highly increased mileage thanks to special tread compound
- Improved handling even on wet roads due to smart tread design with flexible sipes
- Better driving comfort and even wear due to improved footprint
- Improved retreadability



| Tyre sizes | |
|-----------------------------|--------------------------------|
| 245/70 R 17.5 ³⁾ | 385/55 R 22.5 ³⁾ |
| 205/75 R 17.5 ³⁾ | 315/60 R 22.5 ³⁾ |
| 215/75 R 17.5 ³⁾ | 385/65 R 22.5 ³⁾ |
| 225/75 R 17.5 ³⁾ | 315/70 R 22.5 ³⁾ |
| 235/75 R 17.5 ³⁾ | 295/80 R 22.5 ^{2) 3)} |
| 8.5 R 17.5 ³⁾ | 315/80 R 22.5 ^{2) 3)} |
| 245/70 R 19.5 ³⁾ | 12 R 22.5 ^{1) 2)} |
| 265/70 R 19.5 ³⁾ | |
| 285/70 R 19.5 ³⁾ | |

1) Alternative tread pattern
 2) Tyre variant for extra duty operations available in certain markets
 3) Marked sizes with 3PMSF Symbol



EU TYRE LABEL VALUES

Fuel Efficiency: C-D
 Wet Braking: B-D
 Noise Level: 69-73 dB / A-B

EU TYRE LABEL VALUES, Version ED

Fuel Efficiency: C-D
 Wet Braking: B-C
 Noise Level: 69-70 dB / A



Highway/Regional

RUNNER SERIES

RUNNER D2



M+S



Drive axle tyre

- Even wear and thus higher mileage ensured by enhanced compound
- Optimised driving performance in any weather conditions thanks to special drive pattern
- Higher durability due to extra-strong bead design
- Improved retreadability

RUNNER T2

M+S



Trailer axle tyre

- Great mileage thanks to a wider tread area
- Improved cut resistance due to the new tread compound
- Better wet performance over lifetime
- Improved retreadability



EU TYRE LABEL VALUES

Fuel Efficiency: D-E
Wet Braking: C
Noise Level: 73-76 dB / A

EU TYRE LABEL VALUES, Version ED

Fuel Efficiency: D
Wet Braking: C
Noise Level: 73 dB / A



Tyre sizes

| | |
|---------------|-----------------------------|
| 245/70 R 17.5 | 245/70 R 19.5 |
| 205/75 R 17.5 | 265/70 R 19.5 |
| 215/75 R 17.5 | 285/70 R 19.5 |
| 225/75 R 17.5 | 315/70 R 22.5 |
| 235/75 R 17.5 | 295/80 R 22.5 |
| 8.5 R 17.5 | 315/80 R 22.5 ¹⁾ |

1) Tyre variant for extra duty operations available in certain markets



Tyre sizes

| | |
|---------------|-----------------------------|
| 245/70 R 17.5 | 445/45 R 19.5 |
| 215/75 R 17.5 | 245/70 R 19.5 ¹⁾ |
| 235/75 R 17.5 | 285/70 R 19.5 ¹⁾ |
| | 385/55 R 22.5* |
| | 385/65 R 22.5* |

1) Alternative tread pattern
* Will be replaced by new generation in Q3, 2022



EU TYRE LABEL VALUES

Fuel Efficiency: B-D
Wet Braking: B-C
Noise Level: 69-72 dB / A-B



Highway/Regional

EURO SERIES

Flexible and economically

The EURO series was developed to fulfil the flexibility required by daily business. To not only ensure that your goods arrive safely at their destination, but are also being transported economically.

M 434



Front axle tyre

- Steer axle tyres for light trucks in local applications and long distance
- High service life and mileage due to a flat tread contour
- Good grip in the wet



| Tyre sizes | Pattern |
|------------|---------|
| 11 R 22.5 | M 434 |



EU TYRE LABEL VALUES

Fuel Efficiency: C
 Wet Braking: C
 Noise Level: 70 dB / A



Highway/Regional

EURO SERIES

EURO-DRIVE



Drive axle tyre

- Drive axle tyre for light trucks and trucks in regional and long distance services
- High mileage thanks to wider tread
- Optimum traction also in the wet due to massive tread blocks



EU TYRE LABEL VALUES

Fuel Efficiency: D-E
 Wet Braking: C
 Noise Level: 76 dB / B



| Tyre sizes | Pattern |
|---------------|--------------------------|
| 11 R 22.5 | M 470 ¹⁾ |
| 295/60 R 22.5 | EURO-DRIVE ¹⁾ |
| 315/60 R 22.5 | EURO-DRIVE ¹⁾ |

1) Marked sizes with 3PMSF Symbol

EURO-TRAILER



Trailer axle tyre

- Tyre constructed for midi-trailer concept in regional and long distance haulage, with extra load capacity in comparison to the standard concept
- Outstanding mileage due to wider tread and uniform wear from optimised ground pressure distribution
- Good tracking thanks to specially constructed shoulder grooves



| Tyre sizes | Pattern |
|------------|---------------------|
| 7.50 R 15 | M 422 ²⁾ |



| | |
|-----------|-------|
| 8.25 R 15 | M 222 |
|-----------|-------|

2) Alternative tread pattern



EU TYRE LABEL VALUES

Fuel Efficiency: C-D
 Wet Braking: C
 Noise Level: 70-71 dB / B



**ADRIANO,
3,328,760 KM
SINCE 1983**

Inexhaustible. Just like you.

Robust.

On-road and on construction sites.

On construction sites both man and material face various challenges. Ground and weather conditions are constantly changing, and those who operate in off-road environments always have to be prepared for unpleasant surprises. At the same time, tight deadlines leave little room for work interruptions.

In this tough work environment, robustness becomes a top priority. Ultimately, it is the tyres that determine whether driver and vehicle are able to carry out their demanding task. Semperit tyres reliably bring your vehicles through off-road terrain and safely back onto the road – come what may.



Mixed / Construction WORKER SERIES

WORKER F2



Front axle tyre

- Designed to safely steer through toughest terrain such as gravel and sand
- For combined on- and off-road use
- Optimal traction and precise steering, even on challenging grounds
- Good cut and chip resistance thanks to robust tread compound
- Long-lasting casing for increased retreadability



| EU TYRE LABEL VALUES | |
|----------------------|-----------|
| Fuel Efficiency: | C |
| Wet Braking: | B |
| Noise Level: | 72 dB / B |



| Tyre sizes | Pattern |
|-----------------------------|-----------|
| 315/80 R 22.5 ¹⁾ | WORKER F2 |
| 13 R 22.5 | WORKER F2 |

1) Marked sizes with 3PMSF Symbol

WORKER D2



Drive axle tyre

- Designed for combined on- and off-road use on construction sites
- Excellent durability thanks to special tread compound
- Even wear ensured by optimised pattern structure
- Enhanced traction due to five-block pattern design



| Tyre sizes | Pattern |
|-----------------------------|-----------|
| 315/80 R 22.5 ¹⁾ | WORKER D2 |
| 13 R 22.5 ¹⁾ | WORKER D2 |

1) Marked sizes with 3PMSF Symbol



| EU TYRE LABEL VALUES | |
|----------------------|-----------|
| Fuel Efficiency: | D |
| Wet Braking: | B |
| Noise Level: | 75 dB / B |



Mixed / Construction

WORKER SERIES

WORKER T2



M+S



Trailer axle tyre

- Designated trailer tyre for challenging off-road terrain and winter roads
- Extreme cut and chip resistance thanks to enhanced upper sidewall
- Block pattern for significantly less stone-trapping
- Reliable traction over lifetime, even in muddy or icy terrain



EU TYRE LABEL VALUES

Fuel Efficiency: D
 Wet Braking: B
 Noise Level: 73 dB / A



Tyre sizes

265/70 R 19.5

M 277

M+S



Trailer axle tyre

- Tipper and articulated trailer tyre for combined off-road and construction site use
- Robust casing, resistant to damage
- Good self-cleaning characteristics



Tyre sizes

385/65 R 22.5



EU TYRE LABEL VALUES

Fuel Efficiency: C
 Wet Braking: C
 Noise Level: 75 dB / B



**STEFFI,
1,560,979 KM
SINCE 2001**

Inexhaustible. Just like you.

Determined.

On time in city traffic.

Red traffic lights, zebra crossings, pedestrians and high traffic density – anyone who works in urban transport knows that nothing is closer than the next stop. And then, with every start-up, fuel consumption and costs increase. You see, driving in street canyons is not only a race against time.

To succeed, you need real professionals – at the wheel and on the axles. And to ensure that the shortest route doesn't lead to a dead end, Semperit tyres provide you with precise steering and great braking performance, even on wet roads. At the same time, our developments for minimising rolling resistance support your financial goals in the best way possible.



Urban CITY SERIES

The urban player

Designed for stop-start city traffic, the Semperit CITY A2 tyre combines safety with efficiency. Because you want to make public transport a pleasant journey for your passengers and your budget.

CITY A2



All axle tyre

- Designated bus tyre for stop-start city traffic, especially in public transport
- Specifically designed sidewalls and optimum cut resistance
- Great handling and traction, even in wet conditions
- High mileage
- Low rolling noise



| Tyre sizes |
|---------------|
| 275/70 R 22.5 |

| EU TYRE LABEL VALUES | |
|----------------------|-----------|
| Fuel Efficiency: | D |
| Wet Braking: | B |
| Noise Level: | 72 dB / B |





**CARL,
READY FOR
845,200 LOGS**

Inexhaustible. Just like you.

Protected. Even in the toughest winter conditions.

Night is falling on a chilly day and it's just starting to snow. You're still hours from the depot and your home. Ahead, there could be patches of treacherous black ice, sudden bends, dips and crests. These are extremely challenging conditions for both driver and machine, and especially at the critical interface between you and the road: your tyres.

Whether in snow, rain, mud or sleet, your tyres need to provide you with excellent grip to keep you and your truck safely on the road. The Semperit winter series achieves this and more with its durable tread and resilience against wear, guaranteeing the right level of winter traction. You can rely on your Semperit winter truck tyres to bring you home in spite of what the weather might have in store.



Winter SNOW SERIES

WINTER F2



Front axle tyre

- Optimized lifetime traction due to longitudinal grooves with zig-zag shapes, full-width sipes and deep pocket sipes
- Improved steering and braking traction thanks to angled zig-zag sipes even in challenging winter conditions
- 2-season tread design, in order to give you the best grip in winter and good mileage from spring until autumn
- Good wet performance over the lifetime, due to deep sipes
- Excellent winter performance and good wet traction owing to a new compound

WINTER D2 / D2+*



Drive axle tyre

- Special winter tyre technology with full-depth and full-width sipes for great traction over the lifetime
- Improved traction due to zig-zag shaped sipes
- Special winter tread design maximizes traction on snow and ice
- Perfectly balanced tread compound and pattern, for best traction and mileage combination
- Groove shape optimized for stone ejection, in order to reduce damage from stones



| EU TYRE LABEL VALUES | |
|----------------------|--------------|
| Fuel Efficiency: | C-D |
| Wet Braking: | C |
| Noise Level: | 73-74 dB / B |



| Tyre sizes | |
|---------------|-----------|
| 295/80 R 22.5 | WINTER F2 |
| 315/70 R 22.5 | WINTER F2 |
| 315/80 R 22.5 | WINTER F2 |
| 385/55 R 22.5 | WINTER F2 |
| 385/65 R 22.5 | WINTER F2 |







| Tyre sizes | |
|-----------------------------|------------|
| 315/70 R 22.5 ¹⁾ | WINTER D2 |
| 295/80 R 22.5* | WINTER D2+ |
| 315/70 R 22.5* | WINTER D2+ |
| 315/80 R 22.5* | WINTER D2+ |

¹⁾ Will be stopped in Q3, 2022
* available from Q3, 2022



| EU TYRE LABEL VALUES | |
|----------------------|-----------|
| Fuel Efficiency: | E |
| Wet Braking: | C |
| Noise Level: | 76 dB / B |

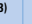



TECHNICAL SPECIFICATIONS

| Tyre sizes | Service description | | | EU tyre label | | | | | | | Rim | | | |
|---------------|---------------------|-----------------------|---|---------------------|----|---|---|---|-----|---|-----------|-----------------------------------|---------------------|------------|
| | Pattern | LI / SI ¹⁾ | Speed symbol and reference speed (km/h) | TT TL ²⁾ | PR |  |  |  | M+S |  | Rim width | Min. distance between rim centres | Max. standard value | External-Ø |
| 245/70 R 17.5 | RUNNER F2 | 136/134 M | M 130 | TL | 14 | D | C | 71/A | • | • | 6.75 | 270 | 250 | 803 |
| | RUNNER D2 | 136/134 M | M 130 | TL | 14 | D | C | 74/B | • | • | 7.50 | 279 | 258 | |
| | RUNNER T2 | 143/141 L (146/146 F) | L 120 (F 80) | TL | 16 | C | C | 69/A | • | | | | | |
| 205/75 R 17.5 | RUNNER F2 | 124/122 M | M 130 | TL | 12 | D | C | 71/A | • | • | 5.25 | 222 | 205 | 765 |
| | RUNNER D2 | 124/122 M | M 130 | TL | 12 | D | C | 74/B | • | • | 6.00 | 231 | 213 | |
| 215/75 R 17.5 | RUNNER F2 | 126/124 M | M 130 | TL | 12 | D | C | 71/A | • | • | 6.00 | 239 | 220 | 779 |
| | RUNNER D2 | 126/124 M | M 130 | TL | 12 | D | C | 74/B | • | • | 6.75 | 246 | 228 | |
| | RUNNER T2 | 135/133 K | K 110 | TL | 16 | D | C | 69/A | • | | | | | |
| 225/75 R 17.5 | RUNNER F2 | 129/127 M | M 130 | TL | 12 | C | D | 71/A | • | • | 6.00 | 246 | 228 | 797 |
| | RUNNER D2 | 129/127 M | M 130 | TL | 12 | D | C | 74/B | • | • | 6.75 | 254 | 235 | |
| 235/75 R 17.5 | RUNNER F2 | 132/130 M | M 130 | TL | 12 | D | C | 71/A | • | • | 6.75 | 262 | 242 | 811 |
| | RUNNER D2 | 132/130 M | M 130 | TL | 12 | D | C | 74/B | • | • | 7.50 | 271 | 251 | |
| | RUNNER T2 | 143/141 K (144/144 F) | K 110 (F 80) | TL | 16 | C | C | 69/A | • | | | | | |
| 8.5 R 17.5 | RUNNER F2 | 121/120 L | L 120 | TL | 10 | D | C | 71/A | • | • | 5.25 | 233 | 215 | 817 |
| | RUNNER D2 | 121/120 L | L 120 | TL | 10 | D | C | 74/B | • | • | 6.00 | 242 | 224 | |
| 445/45 R 19.5 | RUNNER T2 | 160/ - J | J 100 | TL | 22 | B | C | 72/B | • | | 14.00 | | 453 | 911 |
| 245/70 R 19.5 | RUNNER F2 | 136/134 M | M 130 | TL | 16 | D | B | 71/A | • | • | 6.75 | 270 | 250 | 853 |
| | RUNNER D2 | 136/134 M | M 130 | TL | 16 | E | C | 73/A | • | • | 7.50 | 279 | 258 | |
| | RUNNER T2 | 141/140 K | K 110 | TL | 16 | C | C | 70/A | • | | | | | |
| 265/70 R 19.5 | RUNNER F2 | 140/138 M | M 130 | TL | 14 | D | B | 71/A | • | • | 6.75 | 286 | 264 | 881 |
| | RUNNER D2 | 140/138 M | M 130 | TL | 14 | D | C | 74/B | • | • | 7.50 | 295 | 272 | |
| | WORKER T2 | 143/141 J | J 100 | TL | 16 | D | B | 73/A | • | • | 8.25 | 303 | 280 | |
| 285/70 R 19.5 | RUNNER F2 | 146/144 M | M 130 | TL | 16 | D | B | 71/A | • | • | 7.50 | 311 | 287 | 911 |
| | RUNNER D2 | 146/144 M | M 130 | TL | 16 | D | C | 76/B | • | • | 8.25 | 318 | 294 | |
| | RUNNER T2 | 150/148 K | K 110 | TL | 18 | C | C | 70/A | • | | 9.00 | 327 | 303 | |

| Tyre dimensions | | | | | | Load capacity (kg) per axle at inflation pressure ⁶⁾ (bar) (psi) | | | | | | | | | | | |
|-------------------|-----------------|---------------------|----------------------------|------------------|--------------|---|------|------|------|------|-------|-------|-------|-------|-------|-------|------|
| Design value | | Stat. radius ± 1.5% | Rolling circumference ± 2% | LI ¹⁾ | Tyre fitment | 4.5 | 5.0 | 5.5 | 6.0 | 6.5 | 7.0 | 7.5 | 8.0 | 8.5 | 9.0 | | |
| Width +1% | External-Ø ± 1% | | | | | (65) | (73) | (80) | (87) | (94) | (102) | (109) | (116) | (123) | (131) | | |
| 240 248 | 789 | 364 | 2406 | 146 | S | | 3590 | 3870 | 4150 | 4425 | 4695 | 4965 | 5225 | 5485 | 5745 | | |
| | | | | | | 143 | S | 3405 | 3675 | 3940 | 4200 | 4455 | 4710 | 4955 | 5205 | 5450 | |
| | | | | | | 136 | S | 2930 | 3160 | 3390 | 3610 | 3835 | 4050 | 4265 | 4480 | | |
| | | | | | | 146 | D | 7180 | 7745 | 8305 | 8855 | 9395 | 9930 | 10455 | 10975 | 11490 | |
| | | | | | | 141 | D | 6435 | 6945 | 7445 | 7935 | 8420 | 8900 | 9370 | 9835 | 10300 | |
| 197 205 212 | 753 | 353 | 2297 | 124 | S | | 2310 | 2495 | 2675 | 2850 | 3025 | 3200 | | | | | |
| | | | | | | 122 | D | 4335 | 4680 | 5015 | 5350 | 5675 | 6000 | | | | |
| | | | | | | | | | | | | | | | | | |
| | | | | | | | | | | | | | | | | | |
| | | | | | | | | | | | | | | | | | |
| 212 219 | 767 | 359 | 2339 | 135 | S | | 2720 | 2940 | 3150 | 3360 | 3565 | 3765 | 3965 | 4165 | 4360 | | |
| | | | | | | 126 | S | 2595 | 2800 | 3005 | 3200 | 3400 | | | | | |
| | | | | | | 133 | D | 5145 | 5555 | 5955 | 6350 | 6735 | 7120 | 7495 | 7870 | 8240 | |
| | | | | | | 124 | D | 4885 | 5275 | 5655 | 6030 | 6400 | | | | | |
| | | | | | | | | | | | | | | | | | |
| 219 226 | 783 | 366 | 2388 | 129 | S | | 2675 | 2885 | 3095 | 3295 | 3500 | 3700 | | | | | |
| | | | | | | 127 | D | 5060 | 5460 | 5855 | 6240 | 6620 | 7000 | | | | |
| 233 241 | 797 | 372 | 2431 | 144 | S | | 3495 | 3775 | 4045 | 4315 | 4580 | 4835 | 5095 | 5345 | 5600 | | |
| | | | | | | 143 | S | 3405 | 3675 | 3940 | 4200 | 4455 | 4710 | 4955 | 5205 | 5450 | |
| | | | | | | 132 | S | 2745 | 2960 | 3175 | 3385 | 3590 | 3795 | 4000 | | | |
| | | | | | | 144 | D | 6995 | 7550 | 8095 | 8630 | 9160 | 9675 | 10190 | 10695 | 11200 | |
| | | | | | | 141 | D | 6435 | 6945 | 7445 | 7935 | 8420 | 8900 | 9370 | 9835 | 10300 | |
| 207 215 223 | 803 | 375 | 2449 | 121 | S | | 2350 | 2535 | 2720 | 2900 | | | | | | | |
| | | | | | | 120 | D | 4535 | 4895 | 5250 | 5600 | | | | | | |
| | | | | | | | | | | | | | | | | | |
| | | | | | | | | | | | | | | | | | |
| | | | | | | | | | | | | | | | | | |
| 436 446 | 895 | 416 | 2712 | 160 | S | | 5165 | 5620 | 6065 | 6505 | 6935 | 7360 | 7775 | 8190 | 8595 | 9000 | |
| | | | | | | | | | | | | | | | | | |
| 240 248 | 839 | 389 | 2559 | 141 | S | | 3095 | 3365 | 3635 | 3895 | 4155 | 4405 | 4655 | 4905 | 5150 | | |
| | | | | | | 136 | S | 2690 | 2930 | 3160 | 3390 | 3610 | 3835 | 4050 | 4265 | 4480 | |
| | | | | | | 140 | D | 6010 | 6540 | 7055 | 7565 | 8065 | 8560 | 9045 | 9525 | 10000 | |
| | | | | | | 134 | D | 5095 | 5545 | 5985 | 6415 | 6840 | 7260 | 7670 | 8075 | 8480 | |
| 254 262 269 | 867 | 401 | 2644 | 143 | S | | 3155 | 3560 | 3845 | 4120 | 4395 | 4665 | 4930 | 5190 | 5450 | | |
| | | | | | | 140 | S | 3430 | 3700 | 3970 | 4230 | 4490 | 4745 | 5000 | | | |
| | | | | | | 141 | D | 6735 | 7270 | 7795 | 8310 | 8815 | 9315 | 9810 | 10300 | | |
| | | | | | | 138 | D | 5955 | 6480 | 6995 | 7495 | 7995 | 8480 | 8960 | 9440 | | |
| 276 283 291 | 895 | 413 | 2730 | 150 | S | | 4185 | 4515 | 4840 | 5160 | 5475 | 5790 | 6095 | 6400 | 6700 | | |
| | | | | | | 146 | S | 3445 | 3745 | 4045 | 4335 | 4620 | 4905 | 5185 | 5460 | 5730 | 6000 |
| | | | | | | 145 | S | 3485 | 3790 | 4090 | 4385 | 4675 | 4965 | 5245 | 5525 | 5800 | |
| | | | | | | 148 | D | 7870 | 8495 | 9105 | 9710 | 10305 | 10885 | 11465 | 12035 | 12600 | |
| | | | | | | 144 | D | 6430 | 6995 | 7550 | 8095 | 8630 | 9160 | 9675 | 10190 | 10695 | |
| | | | | | | 143 | D | 6550 | 7125 | 7690 | 8245 | 8790 | 9330 | 9860 | 10380 | 10900 | |
| | | | | | | | | | | | | | | | | | |





Footnotes, see page 34

TECHNICAL SPECIFICATIONS

| Tyre sizes | Service description | | | EU tyre label | | | | | | | Rim | | | |
|---------------|----------------------------|-----------------------|---|---------------------|----|---|---|---|-----|---|----------------|-----------------------------------|---------------------|------------|
| | Pattern | LI / SI ¹⁾ | Speed symbol and reference speed (km/h) | TT TL ²⁾ | PR |  ³⁾ |  ⁴⁾ |  ⁵⁾ | M+S |  ⁷⁾ | Rim width | Min. distance between rim centres | Max. standard value | External-Ø |
| 385/55 R 22.5 | RUNNER F2 | 160/- K (158/- L) | K 110 (L 120) | TL | 20 | C | B | 73/B | • | • | 11.75 12.25 | | 396 401 | 1012 |
| | RUNNER T2 | 160/- K | K 110 | TL | 20 | B | B | 70/A | • | | | | | |
| | WINTER F2 | 160/- K (158/- L) | K 110 (L 120) | TL | 20 | D | C | 73/B | • | • | | | | |
| 295/60 R 22.5 | EURO-DRIVE | 150/147 L | L 120 | TL | 18 | D | C | 76/B | • | • | 9.00 9.75 | 329 338 | 304 312 | 940 |
| 315/60 R 22.5 | RUNNER F2 | 154/148 L | L 120 | TL | 20 | C | B | 71/A | • | • | 9.00 9.75 | 344 352 | 318 326 | 966 |
| | EURO-FRONT | 152/148 L | L 120 | TL | 20 | C | C | 70/A | | | | | | |
| | EURO-DRIVE | 152/148 L | L 120 | TL | 20 | D | C | 76/B | • | • | | | | |
| 385/65 R 22.5 | RUNNER F2 | 160/- K (158/- L) | K 110 (L 120) | TL | 20 | C | B | 73/B | • | • | 11.75 12.25 | | 405 410 | 1092 |
| | RUNNER T2 | 160/- K | K 110 | TL | 20 | C | B | 69/A | • | | | | | |
| | TRAILER-STEEL M 277 | 160/- K | K 110 | TL | 20 | C | C | 75/B | • | | | | | |
| | WINTER F2 | 164/- K (158/- L) | K 110 (L 120) | TL | 20 | C | C | 74/B | • | • | | | | |
| 275/70 R 22.5 | CITY A2 | 150/145 J (152/148 F) | J 100 (F 80) | TL | 18 | D | B | 72/B | • | • | 7.50 8.25 | 303 311 | 280 287 | 974 |
| | EURO-STEEL M 349 | 148/145 L | L 120 | TL | 16 | D | C | 70/A | | | | | | |
| 315/70 R 22.5 | RUNNER F2 | 156/150 L (154/150 M) | L 120 (M 130) | TL | 20 | C | B | 71/A | • | • | 9.00 9.75 | 351 360 | 318 326 | 1032 |
| | RUNNER D2 | 154/150 L (152/148 M) | L 120 (M 130) | TL | 20 | D | C | 73/A | • | • | | | | |
| | WINTER F2 | 156/150 L (154/150 M) | L 120 (M 130) | TL | 20 | D | C | 73/B | • | • | | | | |
| | WINTER D2 | 154/150 L (152/148 M) | L 120 (M 130) | TL | 20 | E | C | 76/B | • | • | | | | |
| 295/80 R 22.5 | RUNNER F2 ED | 154/149 M | M 130 | TL | 16 | C | B | 69/A | | | 8.25 9.00 | 326 335 | 302 310 | 1062 |
| | RUNNER F2 | 154/149 M | M 130 | TL | 16 | C | B | 69/A | • | • | | | | |
| | RUNNER D2 | 152/148 M | M 130 | TL | 16 | D | C | 73/A | • | • | | | | |
| | WINTER F2 | 154/149 M | M 130 | TL | 16 | D | C | 73/B | • | • | | | | |

| Tyre dimensions | | | | | | Load capacity (kg) per axle at inflation pressure ⁶⁾ (bar) (psi) | | | | | | | | | |
|-----------------|----------------|------------------------|-------------------------------|---------------------------------|-----------------------|---|------|------|------|-------|-------|-------|-------|-------|-------|
| Design value | | Stat. radius ± 1.5% | Rolling circumference ± 2% | LI ¹⁾ | Tyre fitment | 4.5 | 5.0 | 5.5 | 6.0 | 6.5 | 7.0 | 7.5 | 8.0 | 8.5 | 9.0 |
| Width +1% | External-Ø ±1% | | | | | (65) | (73) | (80) | (87) | (94) | (102) | (109) | (116) | (123) | (131) |
| 381 386 | 996 | 464 | 3018 | 160 158 | S S | 5165 | 5620 | 6065 | 6505 | 6935 | 7360 | 7775 | 8190 | 8595 | 9000 |
| | | | | | | 5110 | 5555 | 6000 | 6430 | 6855 | 7275 | 7690 | 8095 | 8500 | |
| 292 300 | 926 | 435 | 2806 | 150 147 | S D | 3845 | 4185 | 4515 | 4840 | 5160 | 5475 | 5790 | 6095 | 6400 | 6700 |
| | | | | | | 7060 | 7685 | 8290 | 8890 | 9480 | 10055 | 10630 | 11190 | 11750 | 12300 |
| 306 313 | 950 | 445 | 2879 | 154 152 148 | S S D | 4305 | 4685 | 5055 | 5420 | 5780 | 6130 | 6480 | 6825 | 7160 | 7500 |
| | | | | | | 4075 | 4435 | 4785 | 5130 | 5470 | 5805 | 6135 | 6460 | 6780 | 7100 |
| | | | | | | 7235 | 7870 | 8495 | 9105 | 9710 | 10305 | 10885 | 11465 | 12035 | 12600 |
| 389 394 | 1072 | 496 | 3248 | 164 160 158 | S S S | 5740 | 6245 | 6740 | 7225 | 7705 | 8175 | 8640 | 9100 | 9550 | 10000 |
| | | | | | | 5165 | 5620 | 6065 | 6505 | 6935 | 7360 | 7775 | 8190 | 8595 | 9000 |
| | | | | | | 5110 | 5555 | 6000 | 6430 | 6855 | 7275 | 7690 | 8095 | 8500 | |
| 269 276 | 958 | 445 | 2922 | 152 150 148 148 145 | S S S D D | 4075 | 4435 | 4785 | 5130 | 5470 | 5805 | 6135 | 6460 | 6780 | 7100 |
| | | | | | | 3845 | 4185 | 4515 | 4840 | 5160 | 5475 | 5790 | 6095 | 6400 | 6700 |
| | | | | | | 3615 | 3935 | 4245 | 4550 | 4855 | 5150 | 5440 | 5730 | 6015 | 6300 |
| | | | | | | 7235 | 7870 | 8495 | 9105 | 9710 | 10305 | 10885 | 11465 | 12035 | 12600 |
| | | | | | | 6660 | 7245 | 7820 | 8385 | 8940 | 9485 | 10025 | 10555 | 11080 | 11600 |
| 312 320 | 1014 | 468 | 3093 | 156 154 152 150 148 | S S S D D | 4590 | 4995 | 5390 | 5780 | 6165 | 6540 | 6910 | 7280 | 7640 | 8000 |
| | | | | | | 4305 | 4685 | 5055 | 5420 | 5780 | 6130 | 6480 | 6825 | 7160 | 7500 |
| | | | | | | 4265 | 4640 | 5010 | 5370 | 5725 | 6075 | 6420 | 6760 | 7100 | |
| | | | | | | 7695 | 8370 | 9035 | 9685 | 10325 | 10955 | 11580 | 12195 | 12800 | 13400 |
| | | | | | | 7575 | 8240 | 8890 | 9535 | 10165 | 10785 | 11395 | 12000 | 12600 | |
| 290 298 | 1044 | 487 | 3184 | 154 152 149 148 | S S D D | 4505 | 4905 | 5290 | 5675 | 6050 | 6420 | 6785 | 7140 | 7500 | |
| | | | | | | 4265 | 4640 | 5010 | 5370 | 5725 | 6075 | 6420 | 6760 | 7100 | |
| | | | | | | 7815 | 8500 | 9175 | 9835 | 10485 | 11125 | 11760 | 12380 | 13000 | |
| | | | | | | 7575 | 8240 | 8890 | 9535 | 10165 | 10785 | 11395 | 12000 | 12600 | |

TECHNICAL SPECIFICATIONS

| Tyre sizes | Service description | | | EU tyre label | | | | | | | Rim | | | |
|---------------|----------------------------|-----------------------|---|---------------------|----|---|---|---|-----|---|-----------|-----------------------------------|---------------------|------------|
| | Pattern | LI / SI ¹⁾ | Speed symbol and reference speed (km/h) | TT TL ²⁾ | PR |  ³⁾ |  ⁴⁾ |  ⁵⁾ | M+S |  ⁷⁾ | Rim width | Min. distance between rim centres | Max. standard value | External-Ø |
| 315/80 R 22.5 | RUNNER F2 ED | 156/150 L (154/150 M) | L 120 (M 130) | TL | 20 | C | B | 69/A | • | • | 9.00 | 351 | 318 | 1096 |
| | RUNNER F2 | 156/150 L (154/150 M) | L 120 (M 130) | TL | 20 | C | B | 69/A | • | • | 9.75 | 360 | 326 | |
| | RUNNER D2 ED | 156/150 L (154/150 M) | L 120 (M 130) | TL | 20 | D | C | 73/A | • | • | | | | |
| | RUNNER D2 | 156/150 L (154/150 M) | L 120 (M 130) | TL | 20 | D | C | 73/A | • | • | | | | |
| | WORKER F2 | 156/150 K | K 110 | TL | 20 | C | B | 72/B | • | • | | | | |
| | WORKER D2 | 156/150 K | K 110 | TL | 20 | D | B | 75/B | • | • | | | | |
| | WINTER F2 | 156/150 L (154/150 M) | L 120 (M 130) | TL | 18 | D | C | 73/B | • | • | | | | |
| 11 R 22.5 | EURO-STEEL M 434 | 148/145 L | L 120 | TL | 16 | C | C | 70/A | | | 7.50 | 306 | 283 | 1070 |
| | TRANS-STEEL M 470 | 148/145 L | L 120 | TL | 16 | E | C | 76/B | • | • | 8.25 | 314 | 290 | |
| 12 R 22.5 | RUNNER F2 ED | 152/148 L (150/148 M) | L 120 (M 130) | TL | 16 | D | C | 70/A | | | 8.25 | 329 | 304 | 1104 |
| | WORKER D2 | 152/148 K | K 110 | TL | 16 | - | - | - | • | | 9.00 | 338 | 312 | |
| 13 R 22.5 | WORKER F2 | 156/150 K | K 110 | TL | 18 | D | B | 71/B | • | | 9.00 | 352 | 319 | 1146 |
| | WORKER D2 | 156/150 K | K 110 | TL | 18 | D | B | 75/B | • | • | 9.75 | 360 | 326 | |
| 7.50 R 15 | TRAILER-STEEL M 422 | 135/133 G (134/132 J) | G 90 (J 100) | TL | 16 | D | C | 70/A | | | 5.00 | 232 | 212 | 784 |
| | | | | | | | | | | 5.50 | 238 | 217 | | |
| | | | | | | | | | | 6.00 | 244 | 223 | | |
| | | | | | | | | | | 6.50 | 250 | 228 | | |
| 8.25 R 15 | TRAILER-STEEL M 222 | 142/141 G (141/140 J) | G 90 (J 100) | TL | 18 | C | C | 71/B | | | 5.50 | 253 | 235 | 848 |
| | | | | | | | | | | | 6.00 | 259 | 240 | |
| | | | | | | | | | | | 6.50 | 265 | 246 | |
| | | | | | | | | | | | 7.00 | 270 | 252 | |

| Tyre dimensions | | | | | | Load capacity (kg) per axle at inflation pressure ⁶⁾ (bar) (psi) | | | | | | | | | |
|-----------------|-----------------|---------------------|----------------------------|------------------|--------------|---|----------|----------|----------|----------|-----------|-----------|-----------|-----------|-----------|
| Design value | | Stat. radius ± 1.5% | Rolling circumference ± 2% | LI ¹⁾ | Tyre fitment | | | | | | | | | | |
| Width + 1% | External-Ø ± 1% | | | | | 4.5 (65) | 5.0 (73) | 5.5 (80) | 6.0 (87) | 6.5 (94) | 7.0 (102) | 7.5 (109) | 8.0 (116) | 8.5 (123) | 9.0 (131) |
| 312 320 | 1076 | 500 | 3282 | 156 | S | 4590 | 4995 | 5390 | 5780 | 6165 | 6540 | 6910 | 7280 | 7640 | 8000 |
| | | | | 154 | S | 4505 | 4905 | 5290 | 5675 | 6050 | 6420 | 6785 | 7140 | 7500 | |
| | | | | 150 | D | 8055 | 8760 | 9455 | 10140 | 10810 | 11470 | 12120 | 12765 | 13400 | |
| 272 | 1050 | 489 | 3203 | 148 | S | 3785 | 4120 | 4445 | 4765 | 5080 | 5390 | 5695 | 6000 | 6300 | |
| 279 | | | | D | 6970 | 7585 | 8185 | 8775 | 9355 | 9930 | 10490 | 11050 | 11600 | | |
| 292 | 1084 | 504 | 3306 | 152 | S | 4265 | 4640 | 5010 | 5370 | 5725 | 6075 | 6420 | 6760 | 7100 | |
| 300 | | | | S | 4225 | 4600 | 4960 | 5320 | 5670 | 6020 | 6360 | 6700 | 7000 | | |
| | | | | D | 7575 | 8240 | 8890 | 9535 | 10165 | 10785 | 11395 | 12000 | 12600 | | |
| 313 | 1124 | 521 | 3428 | 156 | S | 4590 | 4995 | 5390 | 5780 | 6165 | 6540 | 6910 | 7280 | 7640 | 8000 |
| 320 | | | | D | 8055 | 8760 | 9455 | 10140 | 10810 | 11470 | 12120 | 12765 | 13400 | | |
| 202 | 773 | 357 | 2342 | 135 | S | | 2850 | 3075 | 3295 | 3515 | 3730 | 3940 | 4150 | 4360 | |
| 207 | | | | S | | 2770 | 2990 | 3205 | 3420 | 3630 | 3835 | 4035 | 4240 | | |
| 212 | | | | D | | 5385 | 5815 | 6235 | 6645 | 7050 | 7450 | 7845 | 8240 | | |
| 217 | | | | D | | 5230 | 5645 | 6050 | 6450 | 6845 | 7235 | 7620 | 8000 | | |
| | | | | | | | | | | | | | | | |
| 224 | 835 | 383 | 2530 | 142 | S | | 3465 | 3740 | 4010 | 4275 | 4535 | 4795 | 5045 | 5300 | |
| 229 | | | | S | | 3365 | 3635 | 3895 | 4155 | 4405 | 4655 | 4905 | 5150 | | |
| 234 | | | | D | | 6735 | 7270 | 7795 | 8310 | 8815 | 9315 | 9810 | 10300 | | |
| 240 | | | | D | | 6540 | 7055 | 7565 | 8065 | 8560 | 9045 | 9525 | 10000 | | |
| | | | | | | | | | | | | | | | |

Explanation of footnotes

Data acc. to DIN 7805/4, WdK-Guidelines 134/2, 142/2, 143/14, 143/25

1) Load index single/dual wheel fitment and speed symbol

2) TT = Tube Type, TL = Tubeless

3) Fuel efficiency

4) Wet grip

5) External rolling noise (db)

6) For inflation pressure of 8.0 bar (116 psi) and over use valve slit cover plate

7) 3PMSF symbol

EU Tyre Label 2021

Information on the new EU regulation

Semperit welcomes the new EU tyre labelling rules, extending the scheme to cover heavy-duty vehicles. It provides consumers, fleet operators and tyre retailers with objective, reliable and comparable information on three important tyre performance characteristics: the tyre's rolling resistance, wet grip and external rolling noise. A pictogram indicating if the tyre is suitable for use in severe snow conditions (winter and all-season tyres) is present in tyres fulfilling such performance levels.

The new EU tyre label

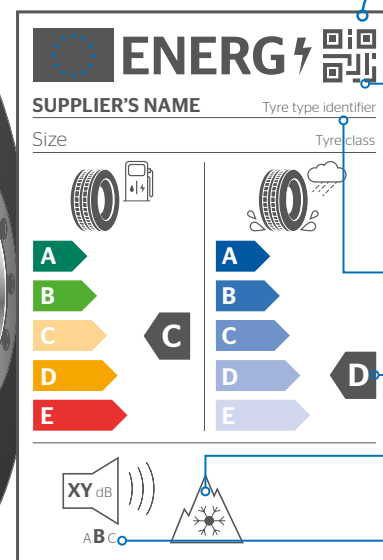


The new EU tyre labelling scheme is effective from **1st May 2021**.

EPREL Database



The EU tyre label



What's new?

QR code individual per "tyre type identifier" with **Link to new European Product Database for Energy Labelling (EPREL)**, where the tyre label and the product information sheet can be accessed in different file formats.

Additional information (tyre type identifier = art. no.)

Reclassification for lower label classes: D is the new E; F and G merge to form E.

Options for including pictograms relating to severe snow conditions (3PMSF).

Noise classes: ABC replace sound waves.

Find out more online: the EU tyre label generator

Find out more about the parameter values of Semperit tyres online: comprehensive, clear and accessible at all times. With the label generator you can quickly and easily find the appropriate EU tyre label parameters for your Semperit tyres. Visit our label generator online at:

www.semperit.com/transport/services/eu-tyre-label

All new label parameters including the links to the label and product information sheet will also be provided via our electronic price catalogue (PRICAT) for direct use in ERP systems.

Regrooving

In accordance with ECE regulation 54, all regroovable Semperit tyres display on both sidewalls the word **REGROOVABLE**

The additional tread depth of up to 4 mm gained by regrooving means a significant increase in performance.

As part of their design, all-steel truck tyres have a so-called tread stock between the upper edge of the belt and the tread grooves. This tread stock is intended to prevent stones, etc. penetrating the steel belts and casing.

Provided it is marked "REGROOVABLE", a commercial vehicle tyre may be regrooved down to a residual undertread thickness of 2 mm above the breaker or belt. All additional regulations of the respective country have to be met. Although tyres can be remoulded after reaching the legal wear limit, regrooving is not advisable in every case. The tread stock thickness is reduced and stones, etc. can more easily penetrate and damage the steel belts, leading to rusting. This has a decidedly negative effect on the tyre's suitability for retreading.

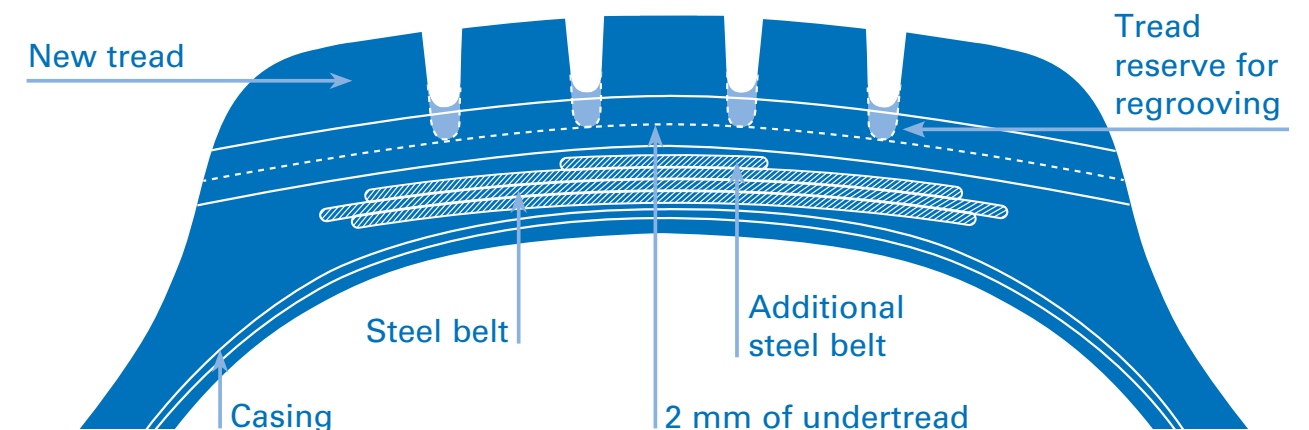
The best time for remoulding is when the tread is worn down to about 3 mm. The tyre must then be checked to make sure the wear is even all round. Attention should be paid to local or uneven wear patches.

Regrooving may only be carried out by a qualified expert, in order to avoid premature failure as well as any reduction in the tyre's suitability for remoulding.

In some countries (e.g. Germany for KOM-100 coaches and Austria for coaches) regrooving of front axle tyres for coaches is prohibited. In general, regrooving on front axle coach tyres is not recommended.

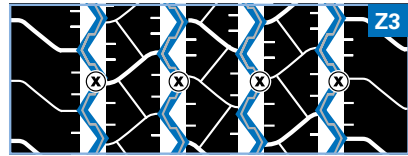
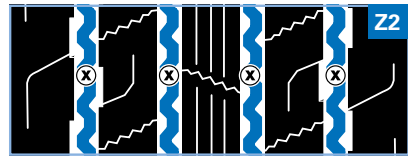
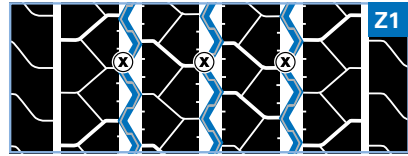
Example:

| | |
|--|----------------------------|
| Tyre sizes | 315/80 R 22.5 RUNNER F2 |
| Original depth of the new tyre | 15.3 mm |
| Additional tread as a result of regrooving | 4.0 mm |



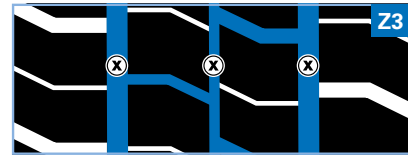
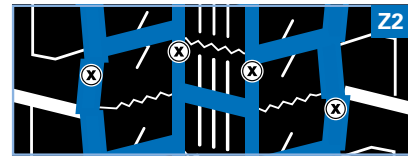
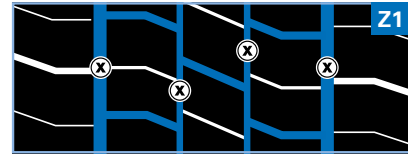
Regrooving

RUNNER F2 / 17.5 / 19.5



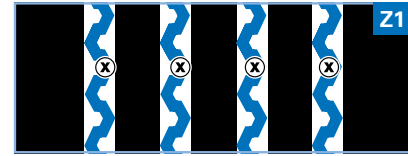
| Tyre sizes | Depth (mm) | Width (mm) |
|-----------------------------|------------|------------|
| 245/70 R 17.5 ^{Z1} | 2.0 | 7 |
| 205/75 R 17.5 ^{Z3} | 2.5 | 7 |
| 215/75 R 17.5 ^{Z2} | 2.0 | 7 |
| 225/75 R 17.5 ^{Z3} | 2.5 | 7 |
| 235/75 R 17.5 ^{Z2} | 2.5 | 7 |
| 8.5 R 17.5 ^{Z3} | 2.0 | 7 |
| 245/70 R 19.5 ^{Z3} | 3.0 | 8 |
| 285/70 R 19.5 ^{Z3} | 3.0 | 9 |

RUNNER D2 / 17.5 / 19.5



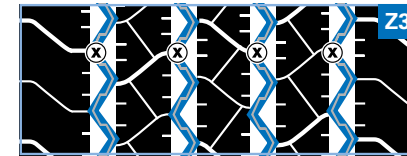
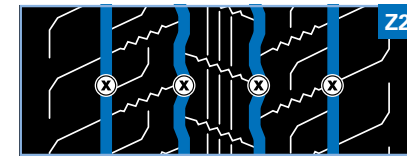
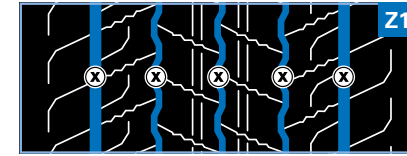
| Tyre sizes | Depth (mm) | Width (mm) |
|-----------------------------|------------|-------------|
| 245/70 R 17.5 ^{Z1} | 2.0 | A: 10, B: 5 |
| 205/75 R 17.5 ^{Z3} | 2.5 | A: 10, B: 5 |
| 215/75 R 17.5 ^{Z2} | 2.0 | A: 10, B: 5 |
| 225/75 R 17.5 ^{Z3} | 2.5 | A: 10, B: 5 |
| 235/75 R 17.5 ^{Z3} | 2.5 | A: 10, B: 5 |
| 8.5 R 17.5 ^{Z3} | 2.0 | A: 10, B: 5 |
| 245/70 R 19.5 ^{Z2} | 3.0 | A: 10, B: 5 |
| 285/70 R 19.5 ^{Z2} | 3.0 | A: 10, B: 5 |

RUNNER T2 / 17.5



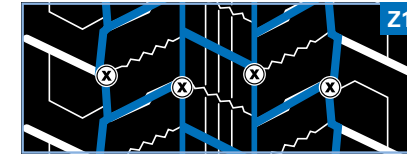
| Tyre sizes | Depth (mm) | Width (mm) |
|-----------------------------|------------|------------|
| 245/70 R 17.5 ^{Z2} | 2.0 | 7 |
| 215/75 R 17.5 ^{Z2} | 2.0 | 8 |
| 235/75 R 17.5 ^{Z2} | 2.0 | 7 |

RUNNER F2 / 22.5



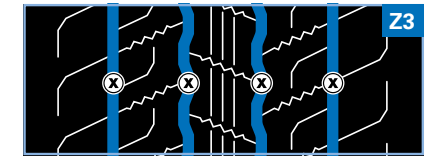
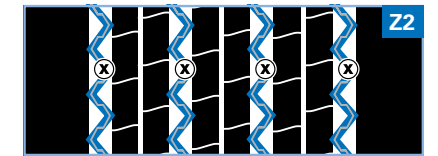
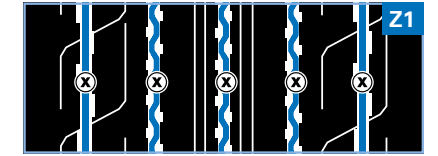
| Tyre sizes | Depth (mm) | Width (mm) |
|-----------------------------|------------|------------------|
| 385/55 R 22.5 ^{Z1} | 3.0 | A: 11, B: 8 |
| 315/60 R 22.5 ^{Z2} | 3.0 | A: 7, B: 4, C: 9 |
| 385/65 R 22.5 ^{Z1} | 3.0 | A: 11, B: 8 |
| 315/70 R 22.5 ^{Z2} | 2.0 | A: 10, B: 10 |
| 295/80 R 22.5 ^{Z2} | 3.0 | A: 11, B: 9 |
| 315/80 R 22.5 ^{Z2} | 3.0 | A: 10, B: 10 |
| 12 R 22.5 ^{Z3} | 3.0 | 7 |

RUNNER D2 / 22.5



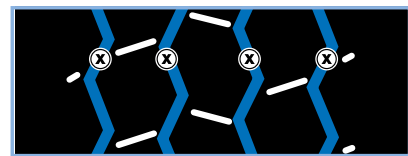
| Tyre sizes | Depth (mm) | Width (mm) |
|-----------------------------|------------|------------|
| 315/70 R 22.5 ^{Z1} | 2.0 | A: 7, B: 5 |
| 295/80 R 22.5 ^{Z1} | 3.0 | A: 7, B: 5 |
| 315/80 R 22.5 ^{Z1} | 3.0 | A: 7, B: 5 |

RUNNER T2 / 19.5 / 22.5



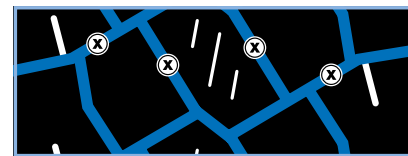
| Tyre sizes | Depth (mm) | Width (mm) |
|-----------------------------|------------|------------|
| 445/45 R 19.5 ^{Z1} | 2.5 | A: 9, B: 7 |
| 245/70 R 19.5 ^{Z2} | 3.0 | 7 |
| 285/70 R 19.5 ^{Z2} | 3.0 | 7 |
| 385/55 R 22.5 ^{Z3} | 3.0 | 10 |
| 385/65 R 22.5 ^{Z3} | 3.0 | 9 |

WORKER F2



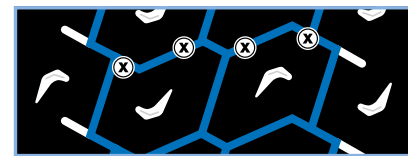
| Tyre sizes | Depth (mm) | Width (mm) |
|---------------|------------|------------|
| 315/80 R 22.5 | 3.0 | 10 |
| 13 R 22.5 | 3.5 | 10 |

WORKER D2



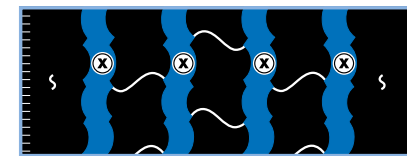
| Tyre sizes | Depth (mm) | Width (mm) |
|---------------|------------|------------|
| 315/80 R 22.5 | 3.0 | 9 |
| 13 R 22.5 | 3.5 | 9 |

WORKER T2



| Tyre sizes | Depth (mm) | Width (mm) |
|---------------|------------|------------|
| 265/70 R 19.5 | 3.0 | 7 |

M 349



| Tyre sizes | Depth (mm) | Width (mm) |
|---------------|------------|------------|
| 275/70 R 22.5 | 2.5 | 10-12 |

M 470 / 17.5



| Tyre sizes | Depth (mm) | Width (mm) |
|---------------|------------|----------------|
| 205/75 R 17.5 | 2.5 | A: 6-7, B: 3-4 |
| 225/75 R 17.5 | 2.5 | A: 6-7, B: 3-4 |
| 235/75 R 17.5 | 2.5 | A: 6-7, B: 3-4 |

M 470 / 22.5



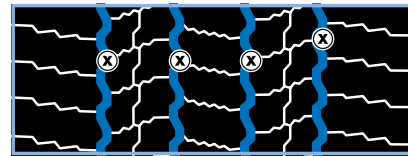
| Tyre sizes | Depth (mm) | Width (mm) |
|------------|------------|-----------------|
| 11 R 22.5 | 3.5 | A: 8-10, B: 3-4 |

M 277



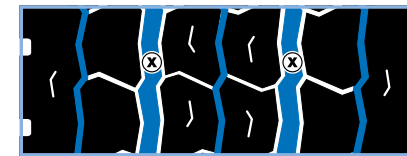
| Tyre sizes | Depth (mm) | Width (mm) |
|---------------|------------|------------|
| 385/65 R 22.5 | 3.5 | 10-12 |

CITY A2



| Tyre sizes | Depth (mm) | Width (mm) |
|---------------|------------|------------|
| 275/70 R 22.5 | 3.0 | 7 |

M 434 / 22.5



| Tyre sizes | Depth (mm) | Width (mm) |
|------------|------------|-----------------|
| 11 R 22.5 | 3.5 | A: 8-10, B: 4-5 |

EURO-DRIVE / 22.5



| Tyre sizes | Depth (mm) | Width (mm) |
|---------------|------------|-----------------|
| 295/60 R 22.5 | 2.5 | A: 8-10, B: 3-4 |
| 315/60 R 22.5 | 3.5 | A: 8-10, B: 3-4 |

⊗ = Measuring point

⊗ = Measuring point



© 2022 by Semperit Commercial Vehicle Tyres
All rights reserved.

Reproduction, reprint or any other form of
duplication – even as excerpts – is permitted
only with prior authorisation from Semperit.

The contents of this manual were compiled
with the greatest care, and reflect decades of
experience. While all data and tips are correct
to the best of our knowledge, they do not
represent a guarantee of properties. In using this
manual, it should be kept in mind that
certain specifications may no longer be up to date,
mainly as a result of technical progress.

No liability for damage of any kind or for any
legal reason can be assumed for the advice
given in this manual.

6567H.en 2022.04

Continental Reifen Deutschland GmbH
Commercial Vehicle Tyres – Semperit
Büttnerstraße 25, 30165 Hannover

Postfach 169
30001 Hannover, Germany

www.semperit-truck-tyres.com



SEMPERIT 
Since 1906.