



NEW!

The snow professional in its element.

The new Master-Grip 2 – at home in the Alps.

Snowy landscapes all the way into the valley? Great, then you're all set. Semperit winter tyres will take you effortlessly up to the summit and back down into the valley. With impressive safety on snow and ice – for generations.

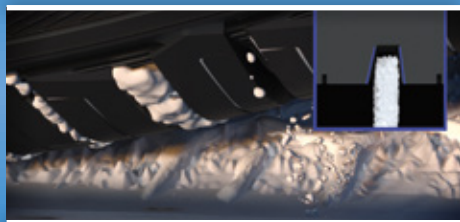


SEMPERIT 
Entire Performance.

www.semperit.com

Master-Grip 2 – The snow professional

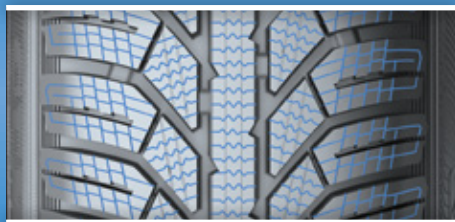
The high density of sipes and the short distance between the individual sipes offer exceptionally good snow performance.



Very good snow traction

- The high density of sipes provides a large number of gripping edges and extra-wide grooves in the shoulder block offers better snow expulsion.

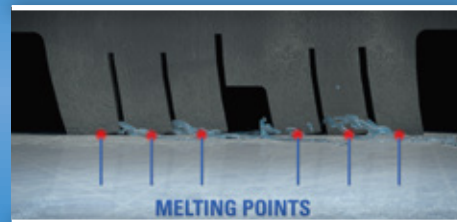
Your advantage: Very good traction and grip during acceleration and braking



Excellent snow handling

- Compact structure in the shoulder blocks provide good lateral support on snow and the centre rib with many gripping edges ensures that the traction and braking forces are transferred.

Your advantage: Excellent performance on snow



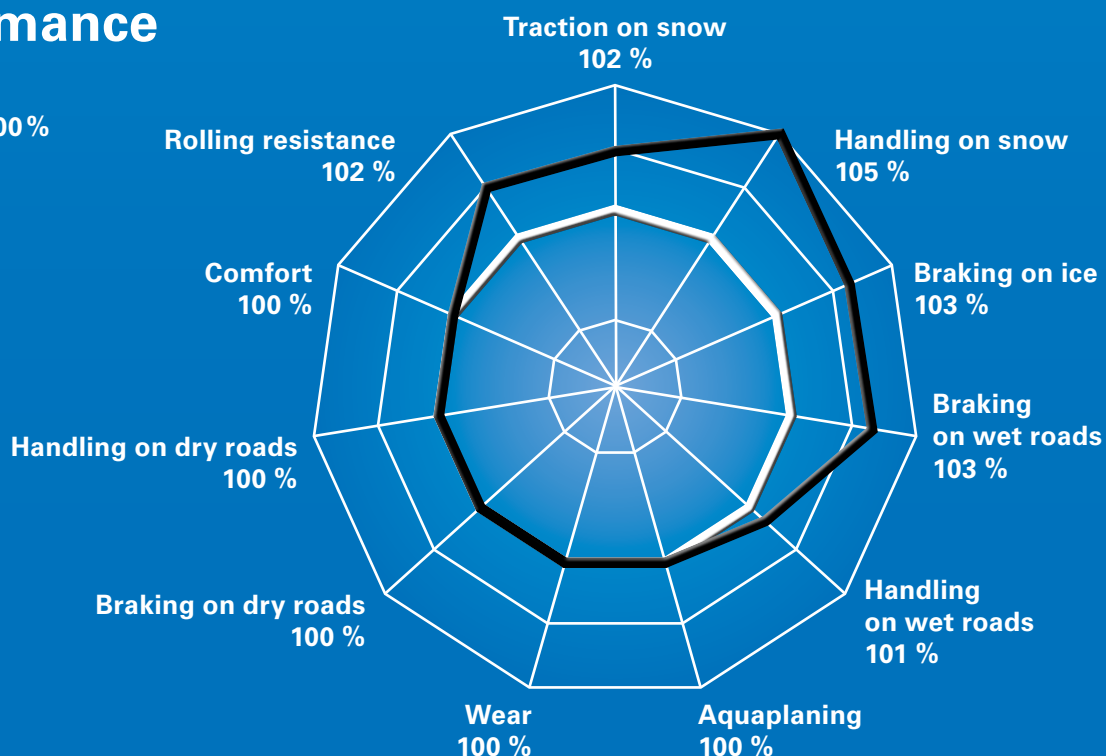
Safe ice braking

- The increased tread stiffness in the longitudinal direction increases the contact area between the rubber and the ice, which is simultaneously well drained by numerous wiping edges.

Your advantage: Safe braking on ice

Tyre performance

- Master-Grip 2
- Master-Grip = 100%



Product range

Dimensions	EU tyre label values				Dimensions	EU tyre label values				Dimensions	EU tyre label values			
			dB					dB					dB	
145/80 R 13 75 T	F	C	71	2	175/70 R 14 88 T XL	E	C	71	2	145/65 R 15 72 T	F	C	71	2
155/80 R 13 79 T	F	C	71	2	185/70 R 14 88 T	E	C	71	2	165/65 R 15 81 T	E	C	71	2
175/80 R 14 88 T	E	C	71	2	155/65 R 13 73 T	F	C	71	2	165/60 R 14 79 T XL	E	C	71	2
145/70 R 13 71 T	F	C	71	2	165/65 R 13 77 T	F	C	71	2	185/60 R 14 82 T	E	C	71	2
155/70 R 13 75 T	F	C	71	2	175/65 R 13 80 T	E	C	71	2	155/60 R 15 74 T	F	C	71	2
165/70 R 13 79 T	E	C	71	2	155/65 R 14 75 T	F	C	71	2	165/60 R 15 77 T	E	C	71	2
175/70 R 13 82 T	E	C	71	2	165/65 R 14 79 T	E	C	71	2	175/60 R 15 81 T	E	C	71	2
165/70 R 14 81 T	E	C	71	2	175/65 R 14 82 T	E	C	71	2	175/55 R 15 77 T	F	C	71	2
165/70 R 14 85 T XL	E	C	71	2	175/65 R 14 86 T XL	E	C	71	2					
175/70 R 14 84 T	E	C	71	2	185/65 R 14 86 T	F	C	71	2					

EU tyre label categories: = Fuel consumption, = Wet grip, dB = Value in decibels, = Class
You can find further information at www.semperit.com